

# SORA 3

45' Nelson Pilot Boat

## Principal particulars

Vessel name	SORA 3
Builder	Berthon Boats, UK
Year of build	1997
Flag	Qatar
Hull Material	GRP
Ship type	Crew transfer/survey
Flag	Qatar
LOA	13.72 m
B	3.76 m
T	1.07 m
Displ.	18 tonnes

## Machinery

Main engines	2 x Caterpillar TA 3208 (2x 315 BHP)
Auxiliary Power	1 x Cummins Onan MDKDP (1 x 13.5 kVA)
Propulsion	2 x FPP
Max Speed	12 knots
FO Capacity	1100 liters
FW Capacity	200 liters
Range	150 nm

## Navigation and Communications Equipment

Radar	Garmin GPSmap 721 XS
VHF	Sailor RT2048 VHF
Compass	Magnetic
AIS	Furuno FA 150 Class A
Chart Plotter	Garmin ECHOMap 52DV
SART	Koden MDC 900

## Accommodation

Passenger capacity	6 Passenger seats
Air conditioning	
Toilets	

## Safety equipment

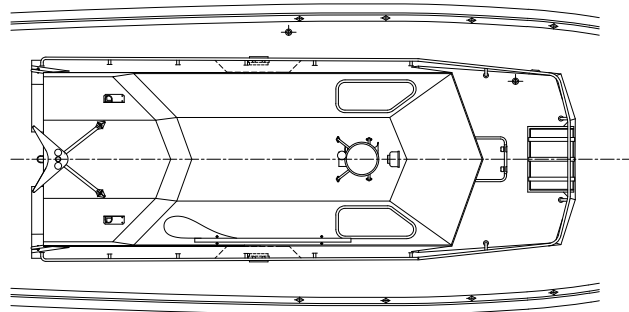
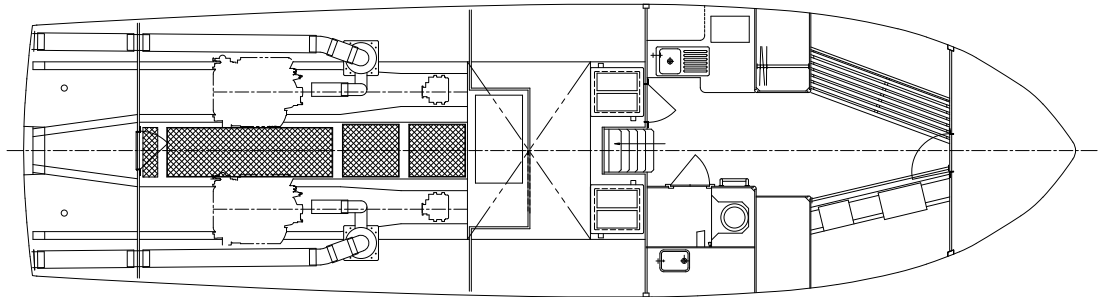
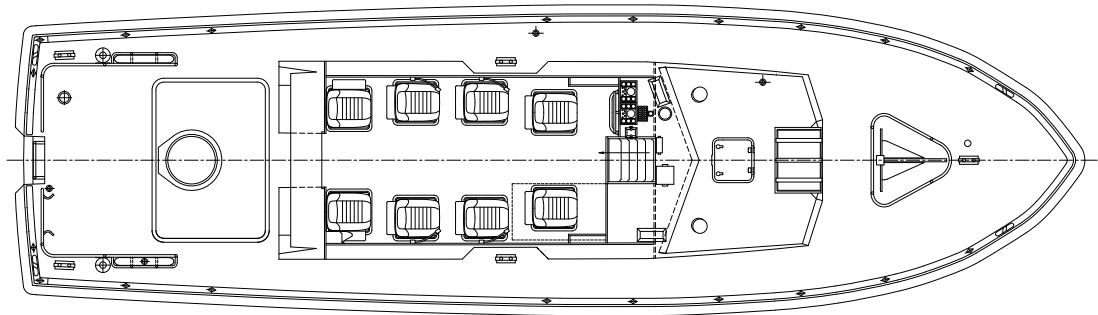
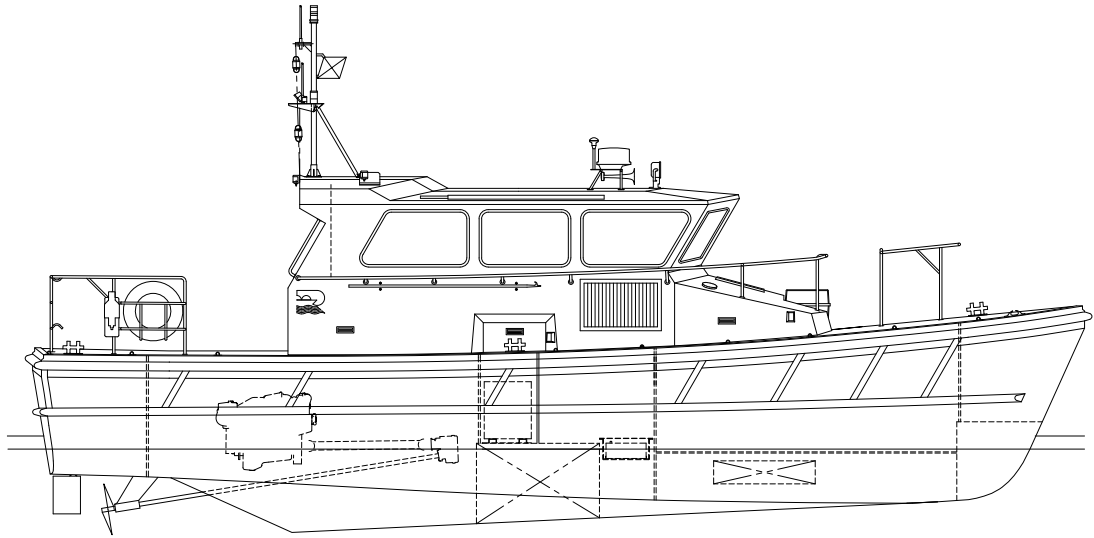
Fire extinguishers	4 x 2 kg Dry powder
Fixed fire fighting system	FM-200 / HFC-227
Fire detection system	Mircom NP-3084MI
Life raft	Sea Sava Plus 8 PAX

Sora Marine Services WLL

P.O. Box 22896, Doha, Qatar / T: +9744427177 / F: +974 4427 7117

[info@soramarine.com](mailto:info@soramarine.com) / [www.soramarine.com](http://www.soramarine.com)





Sora Marine Services WLL

P.O. Box 22896, Doha, Qatar / T: +9744427177 / F: +974 4427 7117

[info@soramarine.com](mailto:info@soramarine.com) / [www.soramarine.com](http://www.soramarine.com)

