



DAMEN STAN TUG® 1205

"MARISOL 1"

GENERAL

YARD NUMBER	502513
DELIVERY DATE	July 2014
BASIC FUNCTIONS	Towing and mooring operations
CLASSIFICATION	Bureau Veritas I ✳ HULL • MACH Tug Coastal Area (extended to 30 nm Persian Golf)
FLAG	Qatar
OWNER	United International Trading & Contracting Est., Qatar

DIMENSIONS

LENGTH O.A.	13.08 m
BEAM (INCL. FENDERS)	5.28 m
DEPTH AT SIDES	2.30 m
DRAUGHT AFT	2.0 m
DISPLACEMENT (98% CONSUMABLES)	54 ton

TANK CAPACITIES (APPROX.)

FUEL OIL	5.80 m ³
FRESH WATER	0.35 m ³
SEWAGE	0.33 m ³
BILGE WATER	0.30 m ³

PERFORMANCES (TRIALS)

BOLLARD PULL	8.4 ton(m)
SPEED	9.6 knots

PROPULSION SYSTEM

MAIN ENGINES/RATING	2x Volvo D9 MH
TOTAL POWER	442 bKW (601 bhp) at 1800 rpm
GEARBOXES/RATIO	Twin Disc MG 5091 / 3.82:1
PROPELLERS	2x Kaplan fixed pitch, 1050 mm diam.
NOZZLES	2x Van de Giessen 'Optima' with stainless steel inner side
ENGINE CONTROL	Volvo MMC
RUDDERS	2x double plate high performance
STEERING GEAR	Powered-hydraulic 2x 50° + rudder indicator

AUXILIARY EQUIPMENT

BATTERY SETS	2x 24 V 230 Ah, change over facility
GENERATOR	ONAN MDKBR-eQD 230V, 17.5 kVA 50Hz
ALARM SYSTEM	Engines, gearboxes + bilge alarm
BILGE/FIRE FIGHTING SYSTEM	Electrical driven SIHI VWSI 5013, 15 m ³ /h at 2.3 bar
FUEL OIL SYSTEM	Water separators, filters + SOS valve
COOLING SYSTEM	Closed keel cooling system
SANITARY SYSTEM	Headhunter 24V pressure set, Rheinstrom 24V sewage discharge pump
ENGINE ROOM VENTILATION	Mechanical ventilation, 8000 m ³ /h
FIRE EXTINGUISHERS	2x 5 kg CO ₂ and 2x 6 kg dry powder

DECK LAY-OUT

ANCHOR	2x 75 kg Pool (High Holding Power)
ANCHOR WINCH	Electrically driven 24V
TOWING HOOK	Mampaey Disc type, 15 ton SWL
SIDE/ASTERN FENDER	Rubber D-fender 150x150 mm
PUSH BOW	Cylindrical rubber fender 380 mm

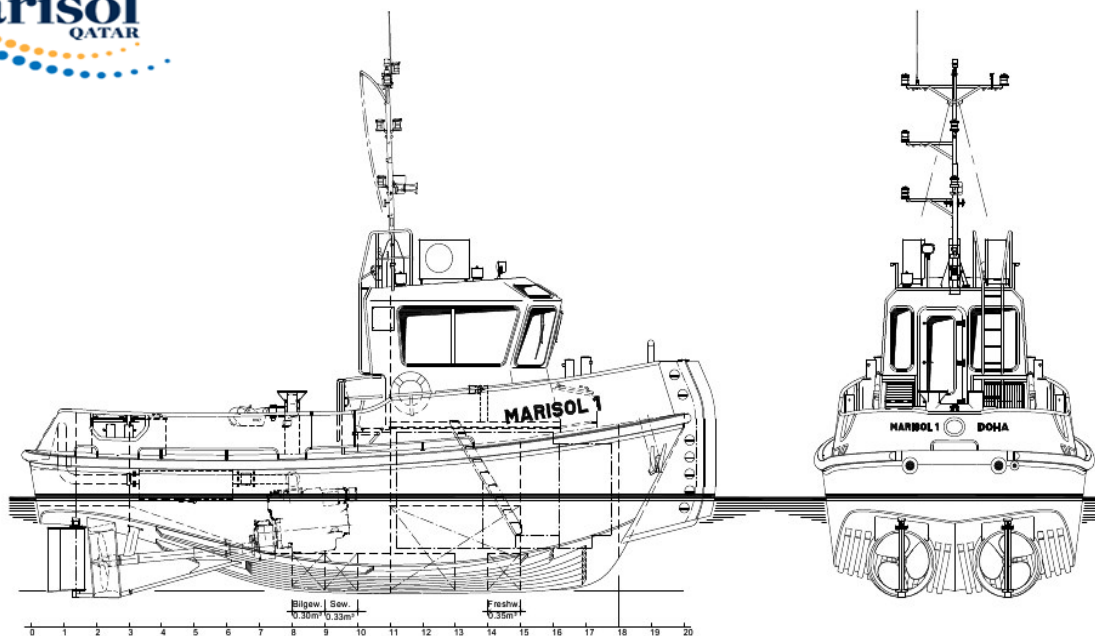
ACCOMMODATION

The air-conditioned wheelhouse is resiliently mounted which results in an extremely low noise level of approx. 55 dB(A). The wheelhouse is completely insulated and finished with durable modern linings and composite synthetic floor. Wheelhouse with a bench for two persons, a table and a helmsman seat. Windows are fitted in aluminium frames. Below deck an air-conditioned accommodation with kitchen unit, toilet, 2 berths and 4 lockers is arranged.

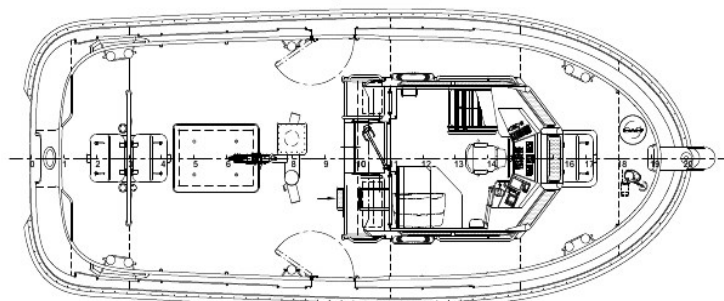
NAUTICAL AND COMMUNICATION EQUIPMENT

SEARCHLIGHT	Den Haan 250 W 24V
COMPASS FLUXGATE	Radio Zeeland, Sigma 345
GPS	Furuno GP-32
ECHO SOUNDER	Furuno LS-6100
VHF RADIO TELEPHONE	Sailor 6248, 25 W
NAVIGATION LIGHTS	Navigation lights incl. towing and side lights

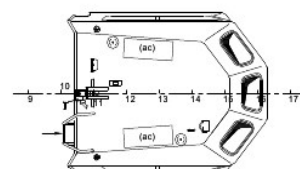
MARISOL 1 — GENERAL ARRANGEMENT PLAN



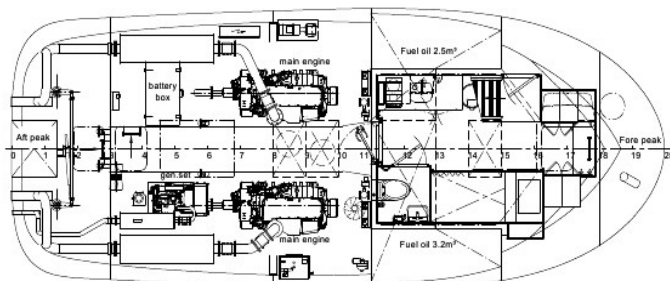
Maideck



Topdeck



Below Maideck



DAMEN STAN TUG® 1205
"MARISOL 1"