



#### GENERAL

Vessel Name	Howailah
Basic Function	Self Propelled Barge
Year of Built	1997
Port of Registry	Doha
Registration No.	2834
Flag	Qatar
Owner	United International

#### DIMENSIONS

L.O.A	20.00 m
Length W.L.	10.00 m
Breadth	10.00 m
Depth	02.00 m
Draught	02.30 m
Gross Tonnage	100 Ton

#### TANK CAPACITIES (APPROX.)

F.W	09.6 Tons
F.O	24,000 Ltrs

#### NAUTICAL AND COMMUNICATION EQUIPMENT

Garmin GPS, VHF Radio, Fuel Tank monitoring gauges, Engine Controls, Navigation Lights

#### PROPULSION SYSTEM

Main Engine	2 X 230HP GM 6V-71 Detroit
Total Power	2 X 75 HP
Gearboxes/Ratio	Twin Disc—MG 509
Propulsion	Harbormaster SRP 100

#### AUXILLIARY EQUIPMENT

Generator	GM 6-71 & 7 Kva
Fire Fighting	Fixed CO2 & Fire Extinguisher

#### LIFE SAVING EQUIPMENT

Life jackets and Life buoys

#### DECK LAYOUT

Anchor Winch	1 ton
--------------	-------

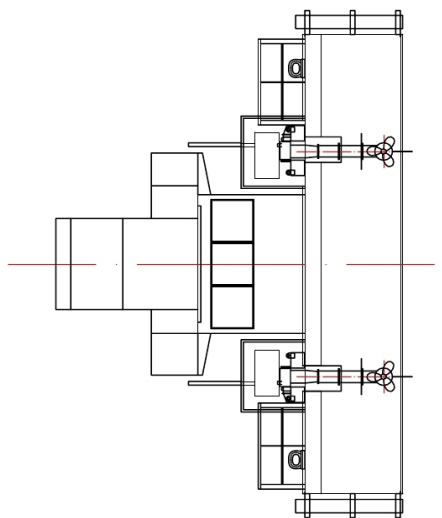
#### ACCOMODATION

Wheel house, Crew Cabin, Toilet, Engine Room, Tanks & Steering Gear Room

#### CONDITION SURVEY SERVICE

DNV .GL — Dated: Jul 17, 2015

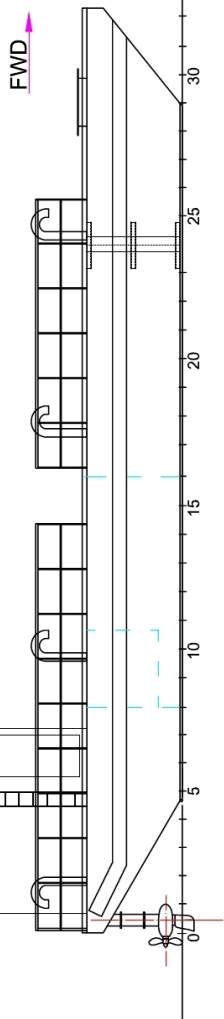
# HOWAILAH BARGE — GENERAL ARRANGEMENT PLAN



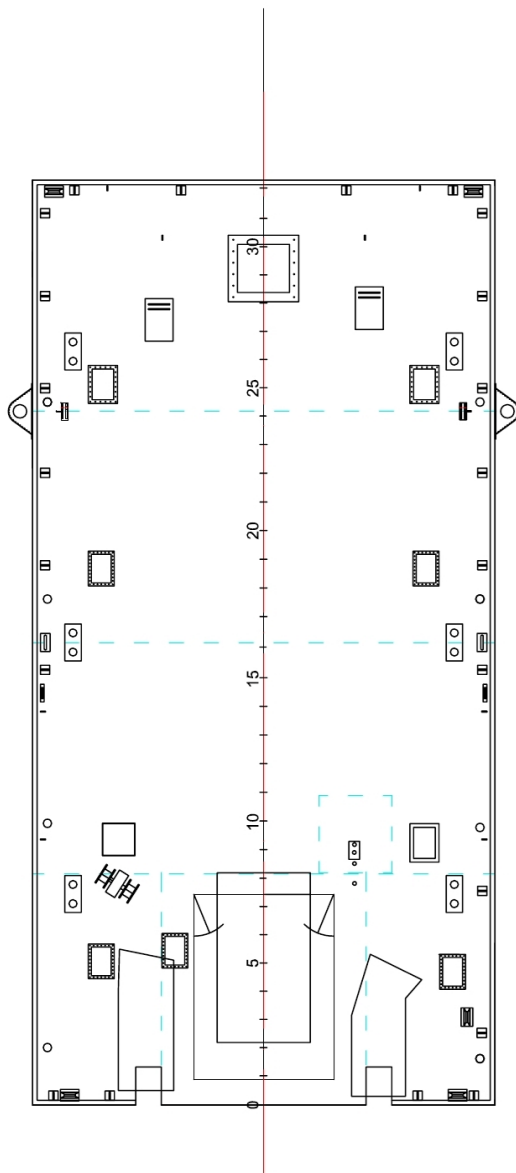
AFT VIEW

**MAIN DIMENSIONS**

L O A - 20.00M  
 BREADTH - 10.00M  
 DEPTH - 02.00M



PROFILE



DECK PLAN  
 CRANE BARGE-HUWAILHA

CLIENT:	SCALE: 1:100	DRG. NO. SK-827/1
JOB ORDER:	SIZE: A3	
TITLE:		
GENERAL ARRANGEMENT		SHIP REPAIR & FABRICATION DEPARTMENT
BARGE HUWAILHA		All rights reserved © 2005 Otor Navigation
	Abdulla Bhagidady	Description
	Approved	
	Checked	
	Drawn	
04-10-2012	Synulabdeen	Date